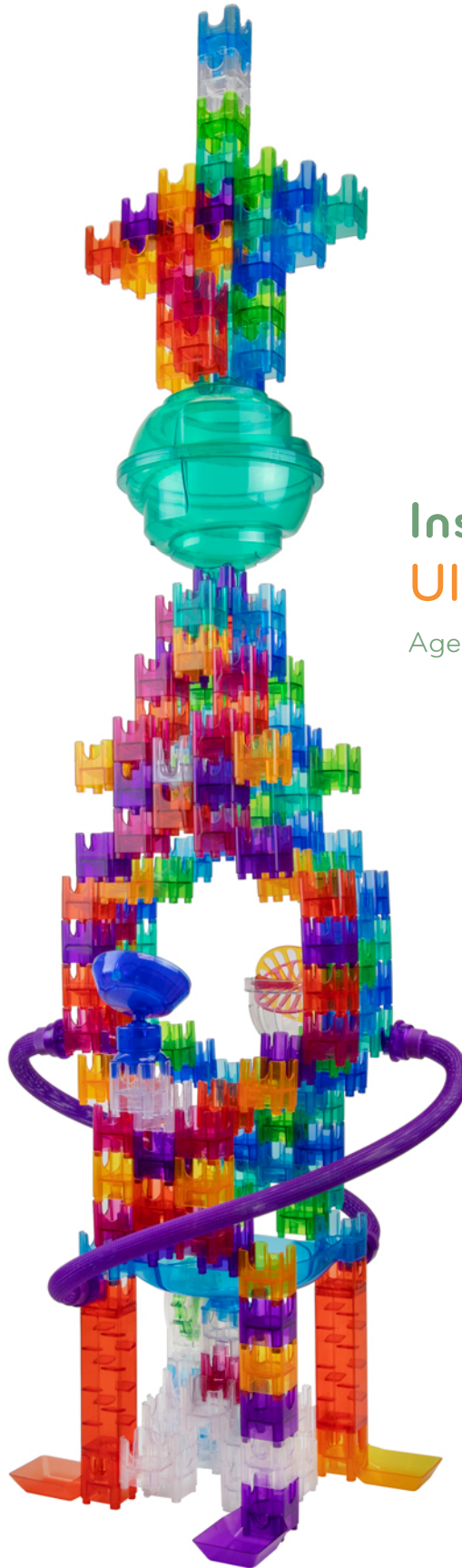


# Q-BA-MAZE™ 2.0

The Next Generation Marble Maze

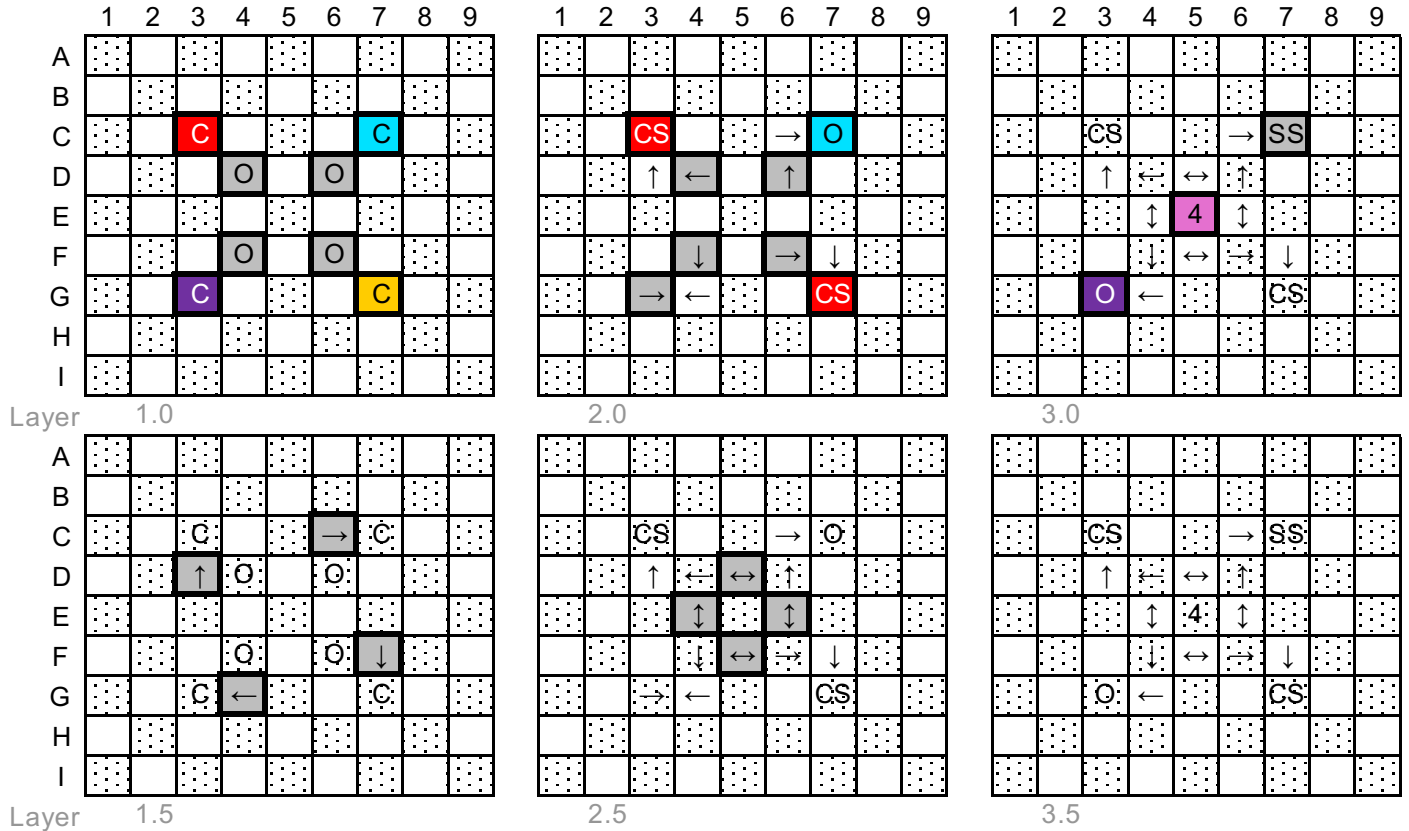


Instructions:

## Ultimate Rocket Tower

Ages 6 and up

<b>O</b> Bottom-Exit Cube	<b>MV</b> Marble Vortex	<b>PT</b> Pivot Trampoline	<b>C</b> Marble Catcher
<b>←</b> Single-Exit Cube (4 different orientations)	<b>S</b> Spiral Sphere	<b>CS</b> Cascade Stilt	
<b>↔</b> Double-Exit Cube (2 different orientations)	<b>RC</b> Roto Catcher	<b>TT</b> Coaster Tube Top (entrance)	
<b>4</b> Quad-Exit Cube	<b>SS</b> Speed Sprocket	<b>TB</b> Coaster Tube Bottom (exit)	



**NOTES:**

- 1) The Coaster Tube Tops (TT) of Layer 10.5 attach to the sides of the Double-Exit Cubes of Layer 11.0
- 2) You will notice that no parts are added in Layer 3.5.  
This is because Bottom-Exit Cubes in Layer 4.0 attach to the tops of parts in Layer 3.0.  
This skipping of half layers is part of how the system works.
- 3) The Sphere (S) is added in Layer 22.0  
You will notice the next four cubes are not added until Layer 26.5.  
Since the Sphere is so tall, eight layers are skipped before adding the next parts.



	1	2	3	4	5	6	7	8	9
A	TT								
B									
C	TB	↓			→	↓			
D		←	←	←	↑	→	↓		
E	→	↑	↑	○	↑	↑	↑	RC	
F		←	↓	←	→	↑	↑		
G		↑	←			↑	TB		
H									
I									

Layer 10.0

	1	2	3	4	5	6	7	8	9
A				TT					
B									
C	TB	↓	←	→	↓				
D		←	←	←	↑	→	↓		
E	→	↑	↑	○	↑	↑	↑	RC	
F		←	↓	←	→	↑	↑		
G		↑	←			↑	TB		
H									
I									

Layer 10.5

	1	2	3	4	5	6	7	8	9
A				TT					
B				↑	↓				
C	TB	←		→	↓				
D		←	←	←	↑	→	↓		
E	PT	↑	↑	○	↑	↑	↑	RC	
F		←	↓	←	→	↑	↑		
G		↑	←			↑	TB		
H				↑	↓				
I									

Layer 11.0

	1	2	3	4	5	6	7	8	9
A				TT					
B				←	→				
C	TB	←		→	↓				
D		←	←	←	↑	→	↓		
E	PT	↑	↑	○	↑	↑	↑	RC	
F		←	↓	←	→	↑	↑		
G		↑	←			↑	TB		
H				←	→				
I									

Layer 11.5

	1	2	3	4	5	6	7	8	9
A				TT					
B				←	→				
C	TB	←		→	↓				
D		←	←	←	↑	→	↓		
E	PT	↑	↑	○	↑	↑	↑	RC	
F		←	↓	←	→	↑	↑		
G		↑	←			↑	TB		
H				←	→				
I									

Layer 12.0

	1	2	3	4	5	6	7	8	9
A				TT					
B				○	↔	○			
C	TB	←		→	↓				
D		←	←	←	↑	→	↓		
E	PT	↑	↑	○	↑	↑	↑	RC	
F		←	↓	←	→	↑	↑		
G		↑	←			↑	TB		
H				○	↔	○			
I									

Layer 12.5

	1	2	3	4	5	6	7	8	9
A				TT					
B				←	→	←			
C	TB	←		→	↓				
D		←	←	←	↑	→	↓		
E	PT	↑	↑	○	↑	↑	↑	RC	
F		←	↓	←	→	↑	↑		
G		↑	←			↑	TB		
H				←	→				
I									

Layer 13.0

	1	2	3	4	5	6	7	8	9
A				TT					
B				←	→	←			
C	TB	←		→	↓				
D		←	←	←	↑	→	↓		
E	PT	↑	↑	○	↑	↑	↑	RC	
F		←	↓	←	→	↑	↑		
G		↑	←			↑	TB		
H				←	→				
I									

Layer 13.5

	1	2	3	4	5	6	7	8	9
A				TT					
B				←	→	←			
C	TB	←		→	↓				
D		←	←	←	↑	→	↓		
E	PT	↑	↑	○	↑	↑	↑	RC	
F		←	↓	←	→	↑	↑		
G		↑	←			↑	TB		
H				←	→				
I									

Layer 14.0

	1	2	3	4	5	6	7	8	9
A				TT					
B				←	→	←			
C	TB	←		→	↓				
D		←	←	←	↑	→	↓		
E	PT	↑	↑	○	↑	↑	↑	RC	
F		←	↓	←	→	↑	↑		
G		↑	←			↑	TB		
H				←	→				
I									

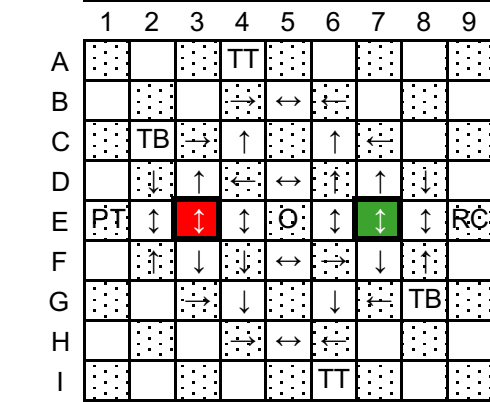
Layer 14.5

	1	2	3	4	5	6	7	8	9
A				TT					
B				←	→	←			
C	TB	←		→	↓				
D		←	←	←	↑	→	↓		
E	PT	↑	↑	○	↑	↑	↑	RC	
F		←	↓	←	→	↑	↑		
G		↑	←			↑	TB		
H				←	→				
I									

Layer 15.0

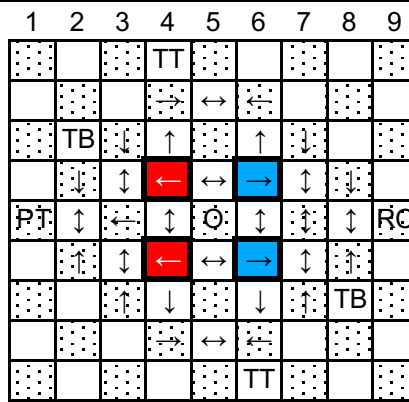
	1	2	3	4	5	6	7	8	9
A				TT					
B				←	→	←			
C	TB	←		→	↓				
D		←	←	←	↑	→	↓		
E	PT	↑	↑	○	↑	↑	↑	RC	
F		←	↓	←	→	↑	↑		
G		↑	←			↑	TB		
H				←	→				
I									

Layer 15.5

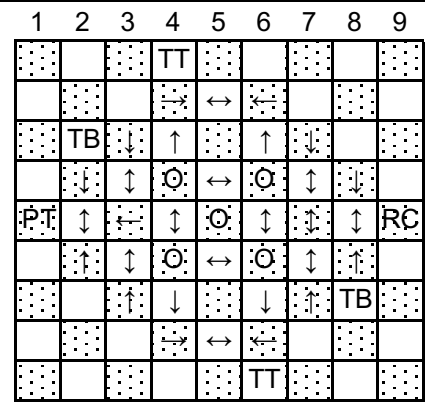


16.0

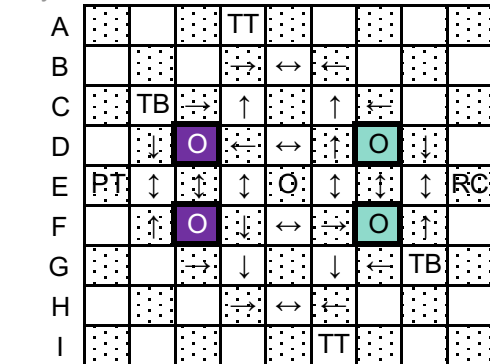
Layer



18.0

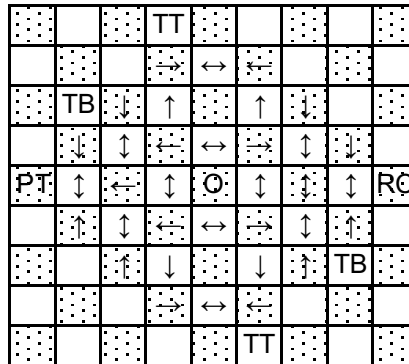


20.0

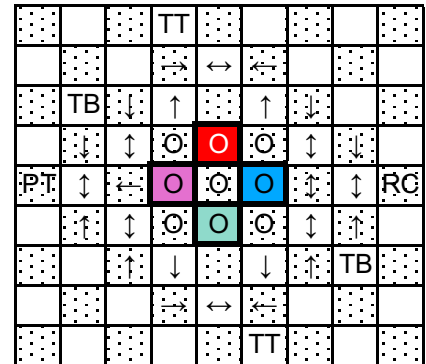


16.5

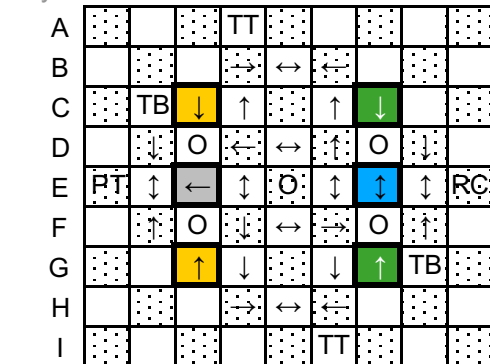
Layer



18.5

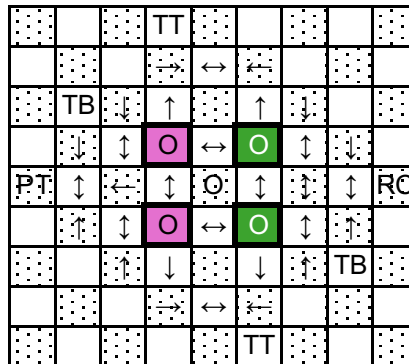


20.5

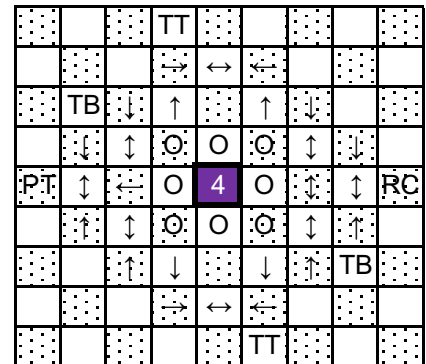


17.0

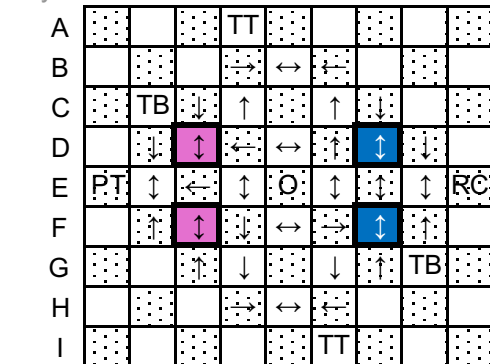
Layer



19.0

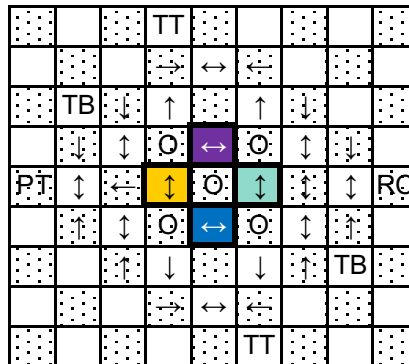


21.0

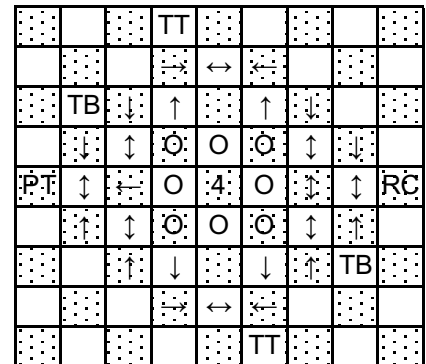


17.5

Layer



19.5



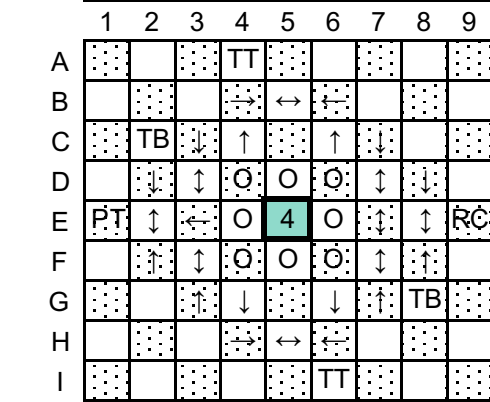
21.5



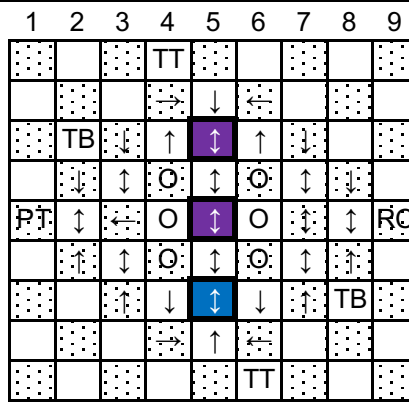
**WARNING: CHOKING HAZARD**

TOY CONTAINS MARBLES. NOT FOR CHILDREN UNDER 3 YRS.

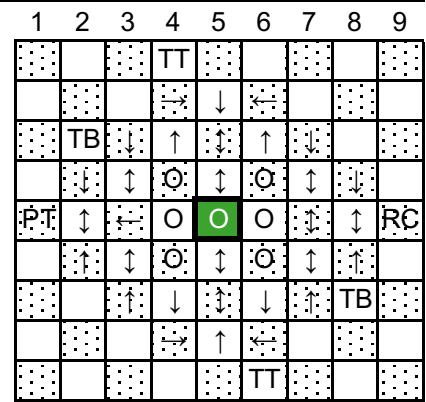




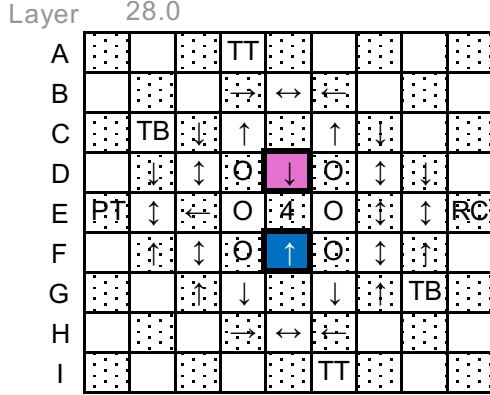
28.0



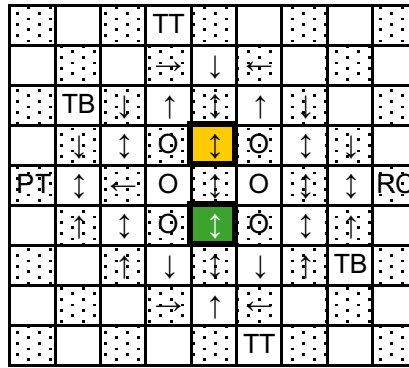
30.0



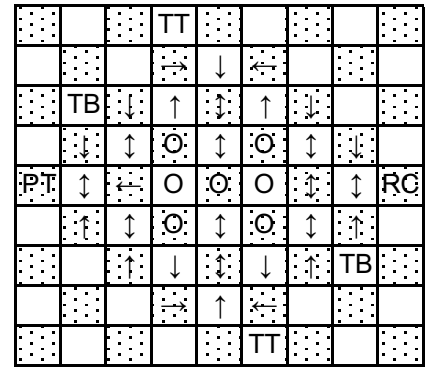
32.0



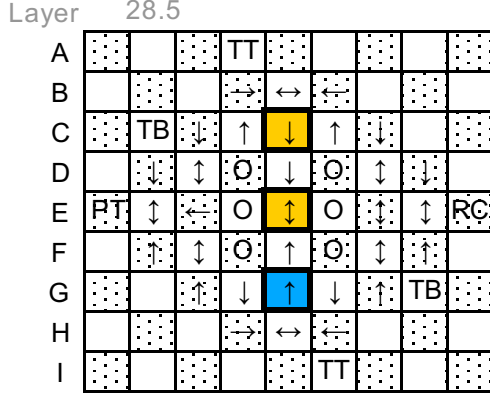
28.5



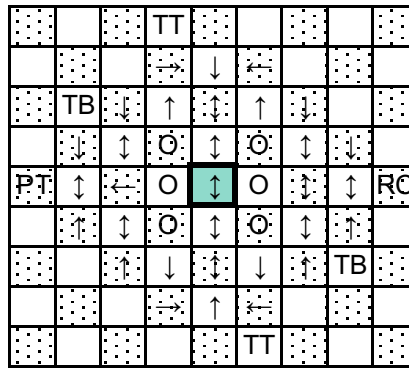
30.5



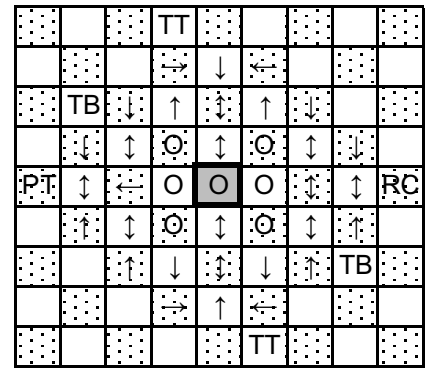
32.5



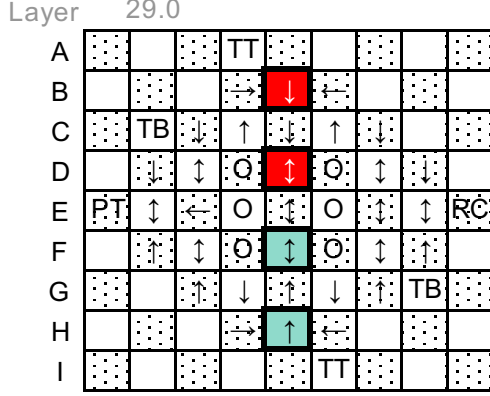
29.0



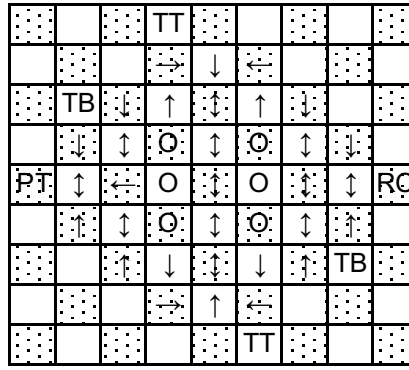
31.0



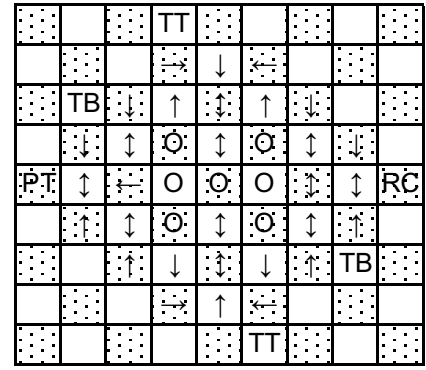
33.0



29.5



31.5



33.5



**WARNING: CHOKING HAZARD**

TOY CONTAINS MARBLES. NOT FOR CHILDREN UNDER 3 YRS.

