

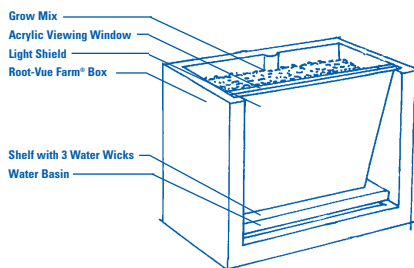
LET'S GET STARTED!

TO ASSEMBLE YOU WILL NEED:

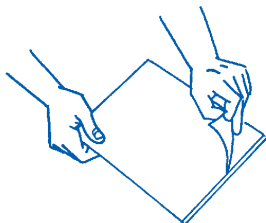
- Scissors
- Bucket or Large Container
- Two quarts of Warm Water
- Pencil or Marking Pen

RVF SET UP INSTRUCTIONS:

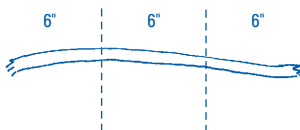
When you have fully assembled the Root-Vue Farm® it will look like this:



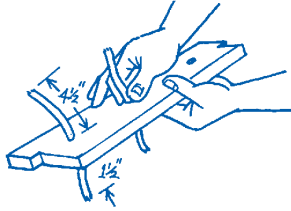
- 1** Remove acrylic viewing window and peel off the protective film.



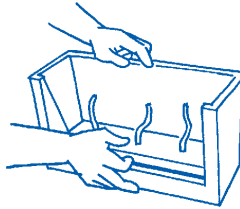
- 2** Cut the 18" water wick material into three 6" wicks.



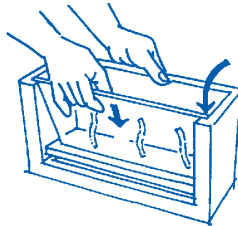
- 3** Remove shelf from Root-Vue Farm® unit and insert the three 6" self-watering wicks in the 3 holes of the shelf with 1 1/2" of wick below the shelf to draw water from the built-in basin and 4 1/2" above to wick the water up into the soil.



- 4** Insert shelf and wicks into lower part of Root-Vue Farm®.



- 5** Insert Viewing Window at an angle as shown. The top of the window should be even with the top of the unit.



- 6** Put the eight GROW MIX wafers into a bucket or large container. Add seven cups of warm water. Watch the wafers expand. Next thoroughly stir and fluff the mix. Once the wafers have fluffed, you may need to add a little more water to the soil until the desired texture is obtained.



1. Drop wafers in container



2. Add 7 cups of warm water



3. Thoroughly stir to fluffy texture

7 Hold water wicks upright inside unit and add GROW MIX 1/2" below the top of the viewing window.

8 Fill the self watering tray (under the shelf) with approximately 1 pint of Water. Be sure you have submerged the water wicks down into the basin. Continue to keep the basin filled with water throughout the growing cycle.

Note: Be careful not to fill the self-watering tray so full that a sudden movement of the RootVue Farm® would spill the water. Use aluminum foil, plastic or a flat pan under planter to avoid water stains, particularly on wood surfaces.

9 Select seed type and plant two or three seed's 1/4" deep and 1/4" from the window 1 1/2" apart. Cover the seeds with the moist soil mix.

10 When planting is completed, write the seed name and the date planted on an Identification Label. Insert in soil near each planting hole.

11 Insert Light Shield outside Viewing Window. This keeps light off the roots when you are not viewing them and will keep them growing at the window. Remove Light Shield for viewing. Then replace so that it fits snugly against the clear window.

12 Place the Root-Vue Farm® in a warm and bright location. A sunny window works well or you can use a "Gro-Lite" bulb available at garden centers or hardware stores.

13 For fast seed sprouting keep the temperature warm and avoid drafts. At 75° the radishes should sprout in 3-4 days. Carrots should sprout in 6 days. Cooler temperatures add several days to sprouting time.

14 Normally more than one seedling will grow at each planting spot. Save the strongest seedling and carefully pull out the others. Keep the unit in a sunny location and periodically remove the Light Shield to see how the roots are growing!